

## PURE RIGID COMPOSITE LUXURY VINYL INSTALLATION INSTRUCTIONS

### INTRODUCTION

To obtain the best results, we suggest using a professional installer. Improper installation can influence your warranty. It is important to fully understand what is required before installation begins. Beauflor continuously seeks to make technological advances in product design, installation methods and accessories.

### NOTICE

Upon receipt, check that the product received is the correct style and color and to the customer's satisfaction. If there are any doubts, do not install the flooring and contact the retailer. Beauflor<sup>®</sup> will not be held responsible for any costs relating to the installation of unsatisfactory or incorrect product.

### PREPARATION

#### ACCLIMATION

Acclimation is a required procedure prior to the installation of PURE Rigid Composite Luxury Vinyl Flooring. Store the UNOPENED BOXES in the room where the flooring is to be installed for at least 48 hours prior to installation. Always store the boxes on a flat and level surface; never store the boxes on their sides. Heating and air conditioning should be operational and set between 55 °F - 85 °F for the acclimation and installation period.

#### SUGGESTED TOOLS

- Safety Glasses
- Utility knife
- Saw / Guillotine
- Pencil
- T-square / Straight Edge
- Tape measure
- Spacers
- Chalk Line

#### SITE CONDITIONS / SUBFLOOR PREPARATION

- Room temperature must be maintained between 55 °F and 85 °F during the installation period.
- Substrate should be free of dust, debris from paint, varnish, wax, oils, curing sealers, solvents and other foreign matter.
- Any adhesive residue from prior installations should be completely removed.
- Any looseness of the substrate should be secured.
- High spots should be levelled and low spots should be filled with a proper material to ensure substrate is flat within 3/16" per 10 foot radius
- All construction seams, expansion joints, and holes should be filled level with the surrounding surface to eliminate telegraphing of such irregularities.
- If you plan to remove old resilient flooring material or any type of old adhesive, please be aware that it may contain asbestos fibers or crystalline silica; therefore, avoid creating dust.
  - Inhalation of such dust is a cancer and respiratory tract hazards and local regulations may require professional removal.
  - Instructions for the removal of old flooring materials and adhesives may be found in the RFCI Recommended Work Practices for Removal of Resilient Floor Coverings. You may contact the Resilient Floor Covering Institute at 706-882-3833 or [www.rfci.com](http://www.rfci.com).
- Use only cement-based patching and leveling compounds.

- Check with patching and leveling compound manufacturers for curing times.
- Check moisture levels before starting installation to ensure moisture levels are within guidelines as outlined in the "Concrete Substrates" paragraph.
- The contractor or owner is responsible for cure time, moisture content testing, and the structural integrity of any leveling or patching compound used.

---

## SUBFLOOR GUIDELINES

PURE Click can be installed over many floors. All carpeting and padding need to be removed. Make sure that the surface is clean, dry, structurally sound and flat within 3/16" per 10 foot radius. Supporting floors must be rigid as too much deflection can result in a failed installation. Maximum deflection should not exceed 3/64" (1.1 mm). PURE Click should not be installed over cushioned-backed vinyl flooring, asphalt-based floors, carpet, self-adhering plank or tile, laminate or other floating flooring or structurally-damaged concrete; concrete should be free from dust, solvents, paint, wax, grease, oil, sealing compounds or curing agents.

---

## CONCRETE SUBFLOORS

**Concrete subfloors must be inspected prior to installation and if they do not meet the following requirements, do not install flooring.** Concrete shall have a minimum compressive strength of 3500 psi. Concrete subfloors must be cured for 60 days prior to installation of the flooring, and should be tested for excessive moisture. Concrete subfloors require moisture testing conducted in accordance with ASTM F1869 Calcium Chloride Test or ASTM F2179 Relative Humidity in Concrete Slabs. Calcium Chloride emissions should not exceed 5 lbs. per 1000 sq. ft. Relative Humidity In-Situ Probes should not exceed 80% RH and the pH level should be between 7 and 9. Testing should be performed and documented prior to beginning installation.

For concrete substrates with excess moisture results, apply Beauflor Moisture Seal 95 in accordance with instructions.

---

## WOOD SUBFLOORS

Wood subfloors require no more than 14% moisture content when tested with pin type meter and must have a minimum 18" cross ventilated space between the bottom of the joist and ground. Exposed earth crawl spaces must be sealed with a polyethylene moisture barrier. For wood installed directly over concrete (sleeper construction), remove the wood and proceed with concrete subfloor guidelines.

Wood subfloors should be a minimum of 3/4" thick, APA approved grade tongue and groove plywood or 23/32" OSB, with a smooth finish, free from spring and deflection. If the wooden subfloor is not an APA approved flooring grade underlayment, a minimum of 1/4" approved wood underlayment must be adhered to the existing substrate. Make sure that the surface is clean, dry, structurally sound and flat within 3/16" per 10 foot radius. All fastener indentations and joints should be level and smooth using appropriate patching compounds. Deflection should not exceed 3/64".

---

## EXISTING RESILIENT FLOORS

When installing PURE Click over existing resilient flooring, ensure that the existing product is in good condition, that it was installed in the full spread glue method and is properly secured. PURE Click can be installed over one layer of non-cushioned sheet flooring. Existing tile or sheet resilient floorings should be stripped using a product that is an appropriate stripper for vinyl to remove wax or other contamination, rinsed with clear water and allowed to dry.

When installing over an existing resilient flooring material, an embossing leveler may be required to prevent the existing material pattern from telegraphing through the new material.

---

## GYPSUM FLOORS

PURE Click can be installed as floating floor over flooring grade gypsum subfloors when properly installed over a subfloor that is structurally sound and flat within 3/16" per 10 foot radius. Gypsum subfloors can be dusty and porous. Apply Beauflor Substrate Primer.

---

#### MARBLE, QUARRY TILE, TERRAZZO, CERAMIC TILE

Properly cleanse substrate using a commercial degreasing/dewaxing solution. Grind or abrade any highly polished or irregular surfaces. Fill any low areas, chips and grout joints that may telegraph through the new flooring.

The joints of PURE Click should never align with underlying tile joints. Tile joints in excess of ¼" width should be filled with latex fortified Portland based filler.

---

#### RADIANT HEAT FLOORS

PURE Click can be installed over embedded radiant-heated floors provided the operating temperature never exceeds 80°F. The radiant system should be in operation for three (3) weeks prior to installation of the flooring. For 48 hours prior to and during installation, the system should be kept at 65°F. Once the installation is completed, the heat should be gradually increased by a maximum of 5°F per day until the desired setting is reached. Do not use radiant heat systems that expose the flooring to wide variations in temperature, such as a wire induction mat system. The installation area of the flooring shall not contain heated and non-heated areas, unless expansion joints separate them. Keep in mind that loose rugs or carpets may accidentally function as heat insulators and raise the temperature to more than the tolerated maximum surface temperature of 80°F.

#### PRE-INSTALLATION INSPECTION

- Cartons should be stored horizontally at all times.
- Protect carton corners from damage.
- Do not install cabinets or kitchen island on your floating floors.
- Inspect all planks for visible defects and damage before and during installation.
  - Do not install damaged planks/tiles. Beauflor will not accept responsibility for claims on flooring installed with visible defects.
  - During installation, inspect the groove area and remove any debris that may prevent proper assembly of planks/tiles.
- LVF is production-run sensitive. Beauflor cannot guarantee that any future replacement or additional installation will match the originally-installed product. The production run number is listed on the short side of the carton.
- Ensure that all boxes are of the correct product and when installing, open several boxes at a time and mix planks from different boxes for best results and overall look.
- Room temperature should be no less than 55 °F for 48 hours before, during and after installation.
- Remove all existing moldings.
- Undercut doorway moldings to the thickness of the flooring.
- PURE Click is a floating floor and should never be nailed down to the substrate.
- PURE Click is intended for indoor use only.
- Determine in which direction the planks will be installed. It is recommended that the flooring be installed running parallel to the longest wall.
- Carefully measure the room to determine the width of the last row of planks/tiles. If the width is less than 2", excluding the tongue, the width of the first row of planks will have to be cut accordingly.
- There are no maximum run sizes requiring expansion within the field.
- The click system on Tile and Planks works together for additional design capabilities

**NOTICE: All commercial installations require approval by a Beauflor sales representative.**

## INSTALLATION

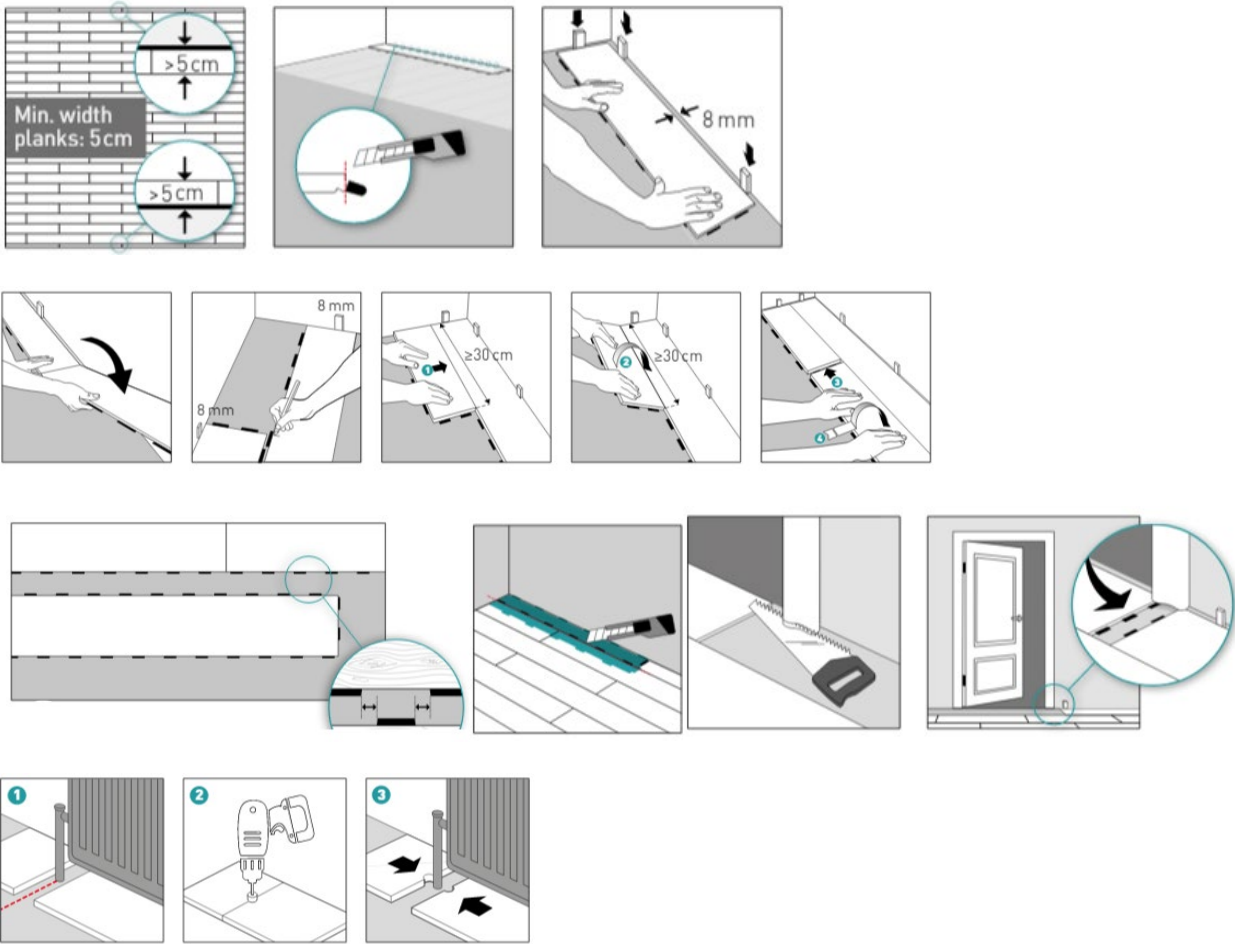
The following step by step instructions are typical installation instructions for Pure vinyl tiles or planks. However, Pure's locking mechanism offers the added benefit of the ability to install the material in both vertical and horizontal directions ( 4 ways)

1. Begin laying planks from the left side of the starting wall and work to the right side. The tongue of the plank should face the starting wall. If the first row does not need to be trimmed in width, you must remove the locks on the side that faces the wall.
2. Place 5/16" spacers between the short and long side of the planks and the wall. Always position one spacer between the wall and where the planks join.
3. The end joints of the planks in the first row are assembled by inserting the tongue side into the groove side of the previous plank at a low angle. Gradually lower the plank down flat until the end joint closes, ensuring that the planks are perfectly aligned. Install remaining full planks in the first row.
4. The last plank in the first row will need to be cut. Measure the distance between the wall and the surface of the last full plank. Subtract 5/16" from this measurement to allow for the spacer. If this measurement is less than 12", the first plank in the row should be cut. The first and last plank in each row should be at least 12" in length. Planks are cut using a sharp utility knife and a square. Score the surface of the plank with the knife and snap the plank at the score line.
5. The remaining piece cut off from the last plank in the first row may serve as the first plank in the second row provided it is at least 12" long. Always stagger end joints from row to row a minimum of 12" apart.
6. Install the long side of the first plank of the second row. Place a 5/16" spacer between the wall and the short side of the plank. Insert the tongue side into the groove side of the plank from the previous row at a low angle and lower flat to the substrate. The click elements of the new row need to be positioned exactly in the middle of two locks from the previous row.
7. Position the long side of the plank with the tongue side, fully engage into the receiver of the first row of product. Lower the plank with firm pressure to the floor, ensuring that the end joint is overlapping and perfectly aligned; push the end joint downward till the end of the plank snaps in place.
8. Continue installing planks in the second row. It is important to make sure that the first two rows are straight and square as they can affect the entire installation.
9. Continue working from left to right, row by row.
10. To install the last row, position a loose panel exactly on top of the last laid. Place another panel upside down up to the wall and mark the panel underneath. Cut the marked panel to size and fit in place, maintaining 5/16" expansion gap between the panel and wall. This method should be repeated until the last row is complete.
11. For doorways, cut the panel to size taking into account 5/16" expansion for the transition piece, and slide into adjacent panel until locked.
12. Be sure to maintain a 5/16" space around all walls and vertical objects.

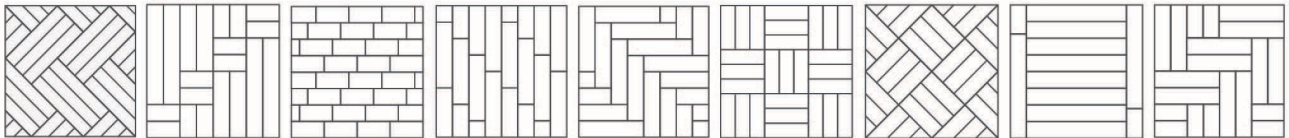
## FINISHING INSTALLATION

1. After all planks have been installed, remove spacers from perimeter of room.
2. Do not fasten any moldings through the flooring.
3. Install quarter-round or baseboard molding. Molding should be of sufficient size to cover the expansion space and should be fastened to the wall, not to the flooring.

## INSTALLATION ILLUSTRATIONS



### ADDITIONAL INSTALLATION PATTERNS



### GENERAL PROTECTION

- Use plywood to cover the top of the flooring when moving heavy furniture or appliances into position.
- Use floor protectors under the legs of furniture and chairs.
- Heavy furnishing loads placed on the floor can pin the product down to the substrate which may prevent the product from expanding and contracting evenly, causing side or end separation, peaking or gapping.
- Do not nail, glue or otherwise adhere PURE Click.
- PURE Click is intended for indoor use only.
- PURE Click is warranted as a floor covering only.
- Post-installation temperature should be maintained between 55 °F - 85 °F. Relative humidity should be maintained between 40% and 70%.
- **PURE Click luxury vinyl flooring must be protected from direct sunlight exposure. Beauflor recommends using UV protective film, blinds or curtains in all windows that provide direct sunlight to ensure that the products are not overheated.** Luxury vinyl floor coverings exposed to excessive heat are subject to thermal expansion which may lead to buckling or peaking. Beauflor will not be held liable for any claims or damages arising out of or related to the failure of the installation when the flooring is exposed to direct sunlight.

- To keep your floor in good condition, it is important to place non-rubber backed doormats at all entrances, to prevent dirt or grit on your floor. Placing doormats will eliminate abrasive particles driven by footwear and will reduce damage. Do not use rubber-backed mats, as long-lasting contact with rubber can cause permanent discoloration. Never place doormats on a wet floor.
- Rolling office chairs, casters, furniture legs, fitness appliances, etc. should be fitted with soft, non-rubber casters, to avoid permanent damage to your floor. Use a suitable desk mat.
- You should use felt pads or protective feet for items that contain rubber, such as chair legs, furniture legs, fitness appliances, etc.

Follow the Beauflor Care and Maintenance instructions to properly care for your flooring.

#### HOMEOWNER OBLIGATIONS

To maintain warranty coverage and ensure fast and easy warranty service, the homeowner is responsible for the following:

- Keep five (5) planks/tiles of the product after installation for testing purposes.
- Keep and be able to provide the original sales receipt or documentation illustrating proof of purchase and installation date of the product.
- Make sure the flooring is installed according to Beauflor Installation Instructions.
- Keep a list of cleaners used to maintain the flooring.

#### BEAUFLOL USA, LLC

---

This document presents general installation instructions, and is not intended to replace the professional installation expertise of a professional installer. As all installation situations are unique, professional installation is advised.

To ensure the best possible installation, and to ensure the validity of the warranty, these instructions should be followed carefully. Please visit our website at [www.beauflor.us](http://www.beauflor.us) for the most up-to-date version of this document, and for additional care and maintenance, and warranty information.