

**LAMINATE  
TRENDLINE PRO – HYDRANA  
INSTALLATION INSTRUCTIONS**

## INTRODUCTION

To obtain the best results, we suggest using a professional installer. Improper installation can influence warranty coverage. It is important to fully understand what is required before installation begins. Beauflor continuously seeks to make technological advances in product design, installation methods, and accessories.

## NOTICE

Upon receipt, confirm that the product received is the correct style, color, and grade. If there are any doubts, do not install the flooring and contact the retailer. Beauflor<sup>®</sup> will not be held responsible for any costs relating to the installation of unsatisfactory or incorrect product. For warranty coverage, product must be installed in accordance with Beauflor installation guidelines using Beauflor installation sundries.

**WARNING:** Drilling, sawing, sanding or machining wood products can expose you to wood dust, a substance known to the State of California to cause [cancer](#). Avoid inhaling wood dust or use a dust mask or other safeguards for personal protection. For more information go to [www.P65Warnings.ca.gov/wood](http://www.P65Warnings.ca.gov/wood).

## PREPARATION

### ACCLIMATION

Acclimation is required prior to the installation of laminate flooring. Store the UNOPENED BOXES in the room where the flooring is to be installed for at least 48 hours prior to installation. Always store the boxes on a flat and level surface; never store the boxes on their sides. Cross stack cartons in the middle of the room to allow proper air circulation.

Heating and air conditioning should be operational and set between 65° F - 85° F and relative humidity in the room should be 40% - 60 % during the acclimation period and thereafter the installation.

### SUGGESTED TOOLS

- Safety Glasses
- Utility knife
- Saw /Guillotine
- Pencil
- T-square / Straight Edge
- Tape measure
- Spacers
- Circular hand or table saw with narrow carbon-tipped blade with a minimum of 60 teeth

### SITE CONDITIONS / SUBFLOOR PREPARATION

- Room temperature must be maintained between 65° F and 85° F during the installation period.
- Substrate should be free of dust, debris from paint, varnish, wax, oils, curing sealers, solvents, and other foreign matter.
- Any adhesive residue from prior installations should be completely removed.
- Any looseness of the substrate should be secured.
- High spots should be levelled and low spots should be filled with proper material to ensure substrate is flat within 3/16" per 10 foot radius.

- High spots should be levelled and low spots should be filled with a Cementous patching to ensure substrate is flat within 3/16" per 10 foot radius.
- If you plan to remove old resilient flooring material or any type of old adhesive, please be aware that it may contain asbestos fibers or crystalline silica; therefore, avoid creating dust.
  - Inhalation of such dust are cancer and respiratory tract hazards and local regulations may require professional removal.
  - Instructions for the removal of old flooring materials and adhesives may be found in the RFCI Recommended Work Practices for Removal of Resilient Floor Coverings. You may contact the Resilient Floor Covering Institute at [www.rfci.com](http://www.rfci.com).
- Use only cement-based patching and leveling compounds.
  - Check with patching and leveling compound manufacturers for curing times.
  - Check moisture levels before starting installation to ensure moisture levels are within guidelines as outlined in the "Concrete Substrates" paragraph.
  - The contractor or owner is responsible for cure time, moisture content testing, and the structural integrity of any leveling or patching compound used.

---

## SUBFLOOR GUIDELINES

Beauflor laminate flooring can be installed on most existing floors, wooden, PVC, and concrete floors. All existing flooring should be well adhered to the substrate. Beauflor laminate flooring cannot be installed over any existing flooring that has an attached cushion or is a floating floor. All carpeting and padding as well as adhesives from prior installation must be removed from the surface of the subfloor. Make sure that the surface is clean, dry, structurally sound, and flat within 3/16" per 10 foot radius. Supporting floors must be rigid. Excessive vertical deflection can result in a failed installation.

---

## CONCRETE SUBFLOORS

Concrete subfloors must be inspected prior to installation and if they do not meet the following requirements, do not install flooring. Concrete shall have a minimum compressive strength of 3500 psi. All types of concrete floors, light weight concrete floors or ceramics, require a moisture inhibiting membrane (vapor barrier). Attached underlayment does not qualify as a vapor barrier. Use a polyethylene film of 6-8 mils thick. This vapor barrier must be applied with a minimum of 8" overlap and taped with a waterproof tape and turned 2" up the wall. If not already attached to the plank, you will also need a separate underlay material with a maximum thickness of 2.0 mm. A vapor barrier can be incorporated into the separate underlayment; however, this underlayment must be approved as a moisture barrier underlayment. Check with the underlayment manufacturer's specifications. Concrete subfloors must be cured for 60 days prior to installation of the flooring and should be tested for excessive moisture. Moisture vapor emission rate should not exceed 5 lb. /1000 sq. ft. /24 hours per ASTM F1869. When using the ASTM F2170 test method, the internal relative humidity should not exceed 80%.

---

## WOOD SUBFLOORS

Wood subfloors require no more than 14% moisture content when tested with pin type meter and must have a minimum 18" cross ventilated space between the bottom of the joist and ground. Exposed earth crawl spaces must be sealed with a polyethylene moisture barrier. For wood installed directly over concrete (sleeper construction), remove the wood and proceed with concrete subfloor guidelines.

Wood floors should be a minimum of 3/4" thick, APA approved grade tongue and groove plywood or 23/32" OSB, with a smooth finish, free from spring and deflection. If the wooden subfloor is not an APA approved flooring grade underlayment, a minimum of 1/4" approved wood underlayment must be adhered to the existing substrate. Make sure the surface is clean, dry, structurally sound and flat within 3/16" per 10' foot radius. All fastener indentations and joints should be level and smooth using appropriate patching compounds.

---

## RADIANT HEAT FLOORS

Beauflor laminate flooring can be installed over embedded radiant-heated floors provided the operating temperature never exceeds 80°F. The radiant system should be in operation for three (3) weeks prior to installation of the flooring. For 48 hours prior to and during installation, the system should be kept at 65 °F. Once the installation is completed, the heat should be gradually increased by a maximum of 5 °F per day until the desired setting is reached. Do not use radiant heat systems that expose the flooring to wide variations in temperature, such as a wire induction mat system. The installation area of the flooring shall not contain heated and non-heated areas. A vapor barrier is required for all radiant heat installations. Keep in mind that loose rugs or carpets may function as heat insulators and raise the temperature to more than the tolerated maximum surface temperature of 80 °F.

### PRE-INSTALLATION INSPECTION

- Inspect all planks for visible defects and damage before and during installation.
  - Do not install damaged planks. Beauflor will not accept responsibility for claims on flooring installed with visible defects.
  - During installation, inspect the groove area and remove any debris that may prevent proper assembly of planks.
- Laminate is production-run sensitive. Beauflor cannot guarantee future replacement or additional installation will match the originally-installed product. The production run number is listed on the short side of the carton.
- Remove all existing moldings.
- Undercut doorway moldings to the thickness of the flooring.
- Laminate is a floating floor and should never be nailed down to the substrate.
- Laminate is intended for indoor use only.
- Determine in which direction the planks will be installed. It is recommended the flooring be installed running parallel to the longest wall. Over wooden floor joist systems, run the length of the product perpendicular to the joist system. Over concrete, the following can be used: Lengthwise in the longest direction of the room or lengthwise perpendicular to the main source of incoming light.
- Carefully measure the room to determine the width of the last row of planks. If the width is less than 2", excluding the tongue, the width of the first row of planks will have to be cut accordingly.
- Laminate must have a minimum ¼" expansion space around the walls and all vertical surfaces. Carefully remove wall base or quarter round molding around the base board. Mark its position in order to reinstall over the ¼" expansion. (Please note at least ½" to cover expansion and contraction of the flooring.)
- Do not exceed 45 linear feet, or 2,000SF, without the use of transition molding. When going through doorways less than 6' in width without a T Mold increase the expansion space to 3/8" minimum.
- When cutting laminate flooring with a circular saw, cut with the decorative side down. When using a table saw, jigsaw or handsaw, cut with the decorative side up. Remember that airborne wood dust can be an explosive hazard and an irritant to eyes, skin and the respiratory system. Use dust collectors on power tools, wear appropriate clothing, eye protection, and an approved dust mask.

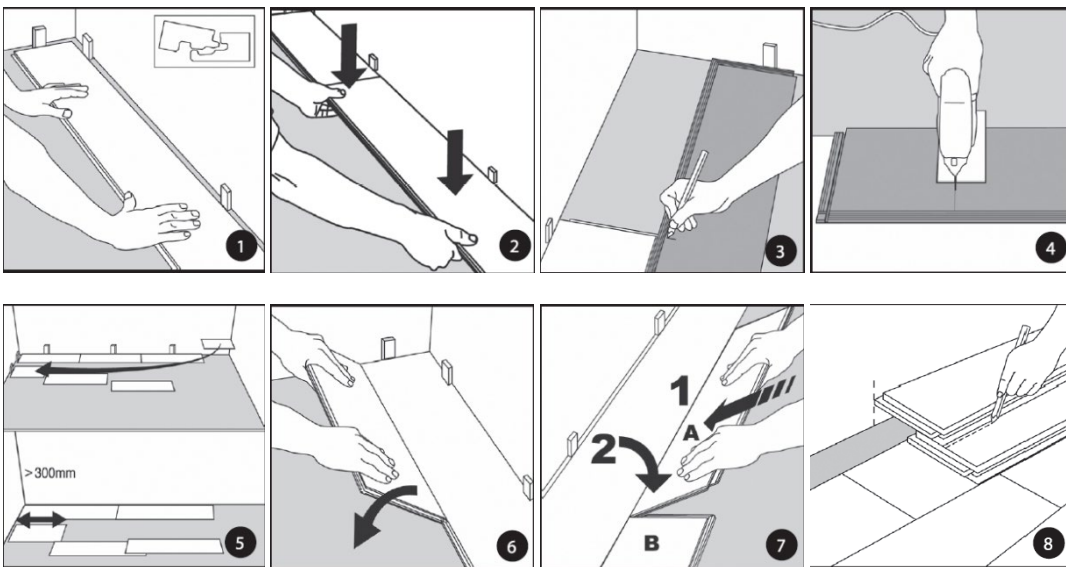
### UNDERLAYMENT -

- Trendline Pro requires an underlayment be installed prior to the floor covering installation. Follow the underlayment manufacturer's instructions. The underlayment must meet all Beauflor specifications no more than 2.0 mm thickness and minimum 5 lb. density.
- Hydrana has an attached underlayment. Do not use an additional underlayment. A 6-8 mil thick polyethylene moisture barrier should be installed between the subfloor and Hydrana.

***NOTICE: All commercial installations require approval by a Beauflor sales representative.***

## INSTALLATION

1. After installing the underlayment, begin in the corner with the plank tongues facing the wall. Allow for minimum  $\frac{1}{4}$ " expansion around the walls (use expansion spacers).
2. Press at an angle the short end of the next plank into the first one. Complete the first row. Cut the last plank if needed.
3. It is easy to cut the last plank in the row by turning it upside down with the tongue facing the wall. Mark the plank, remembering to allow for  $\frac{1}{4}$ " expansion.
4. Saw the plank using a jig saw or similar tool, design side facing down. Use a fine-tooth blade.
5. Begin the following row using the cut off from the previous row (12" or longer and at least 2" wide) as the first plank piece. Keep spaces between joints random and at least 12" apart.
6. Insert the first plank or plank piece tongue into the preceding row's groove. Press forward and fold down.
7. Press second plank forward and fold down to drop in place.
8. To lay the last row: Measure and cut the board. Leave  $\frac{1}{4}$ " distance to the wall.



## FINISHING INSTALLATION

1. After all planks have been installed, remove spacers from perimeter of room.
2. Do not fasten any moldings through the flooring.
3. Install quarter-round or baseboard molding. Molding should be of sufficient size to cover the  $\frac{1}{4}$ " space and should be fastened to the wall, not to the flooring.

## GENERAL PROTECTION

- Use plywood to cover the top of the flooring when moving heavy furniture or appliances into position.
- Heavy furnishing loads placed on the floor can pin the product down to the substrate which may prevent the product from expanding and contracting evenly, causing side or end separation, peaking or gapping.
- Do not nail, glue or otherwise adhere laminate.
- Laminate is intended for indoor use only.
- Laminate is warranted as a floor covering only.
- Post-installation temperature should be maintained between 65 °F - 85 °F. Relative humidity should be maintained between 40% and 60%.
- Laminate must be protected from direct sunlight exposure. Beauflor recommends using UV protective film, blinds or curtains in all windows that provide direct sunlight to ensure that the products are not overheated. Luxury vinyl floor coverings exposed to excessive heat are subject to thermal expansion which may lead to buckling or peaking. Beauflor will not be held liable for any claims or damages arising out of or related to the failure of the installation when the flooring is exposed to direct sunlight.
- To keep your floor in good condition, it is important to place non-rubber backed doormats at all entrances, to prevent dirt or grit on your floor. Placing doormats will eliminate abrasive particles driven by footwear and will reduce damage. Never place doormats on a wet floor.
- Rolling office chairs, casters, furniture legs, fitness appliances, etc. should be fitted with soft, non-rubber casters to avoid permanent damage to your floor. Use a suitable desk mat.
- You should use felt pads or protective feet for items that contain rubber, such as chair legs, furniture legs, fitness appliances, etc.
- Do not install cabinets or kitchen islands on your floating floors.

Follow the Beauflor Care and Maintenance instructions to properly care for your flooring.

## OWNER OBLIGATIONS

To maintain warranty coverage and ensure fast and easy warranty service, the owner is responsible for the following:

- Keep five (5) planks/tiles of the product after installation for testing purposes.
- Keep and be able to provide the original sales receipt or documentation validating proof of purchase and installation date of the product.
- Make sure the flooring is installed according to Beauflor's Installation Instructions.
- Keep a list of cleaners used to maintain the flooring.

## BEAUFLOR USA, LLC

---

This document presents general installation instructions, and is not intended to replace the professional installation expertise of a professional installer. As all installation situations are unique, professional installation is advised.

To ensure the best possible installation, and to ensure the validity of the warranty, these instructions should be followed carefully. Please visit our website at [www.beauflor.us](http://www.beauflor.us) for the most up-to-date version of this document, additional care and maintenance instructions, and warranty information.